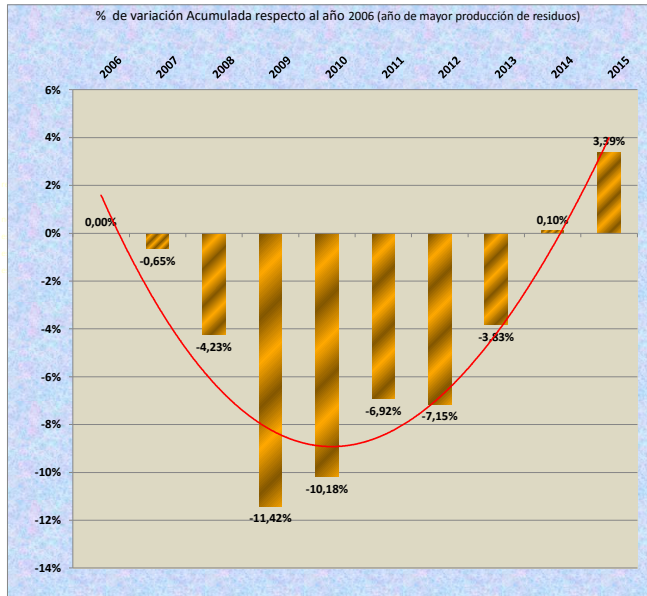
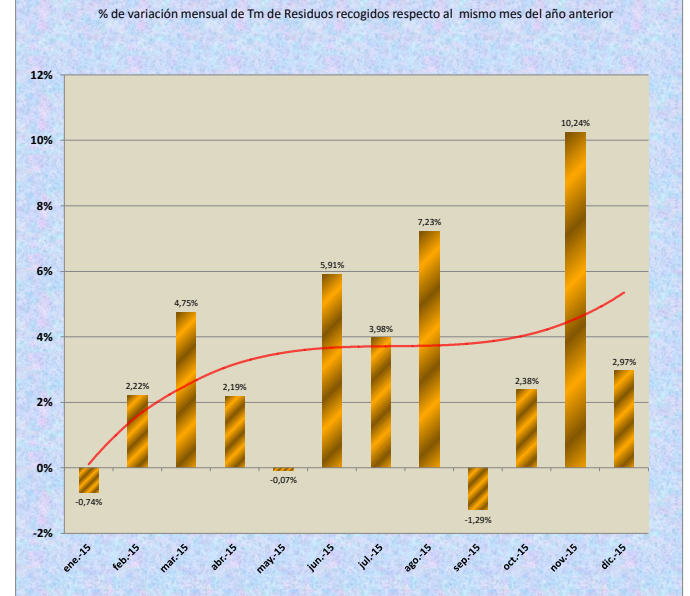
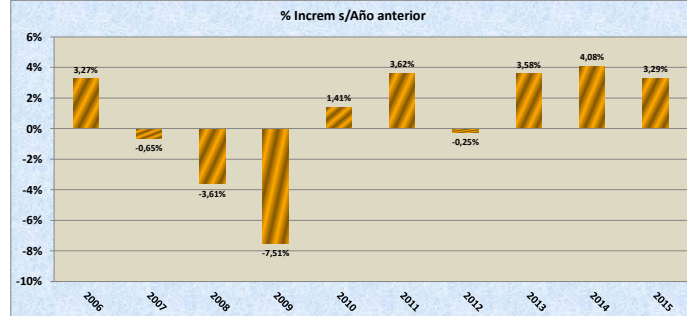


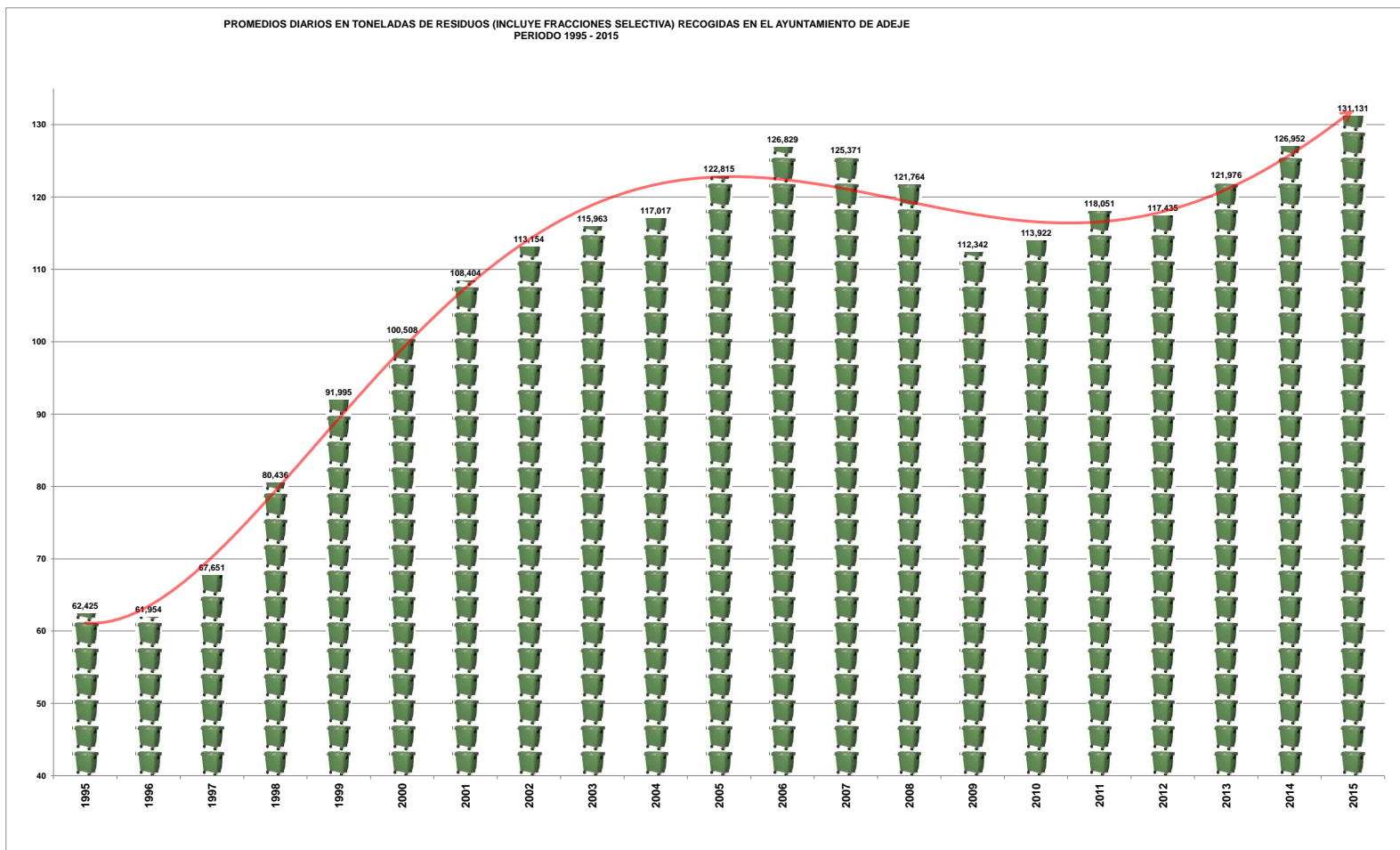
DATOS PRODUCCION DE RESIDUOS POR FRACCION 2006-2015 EN TM

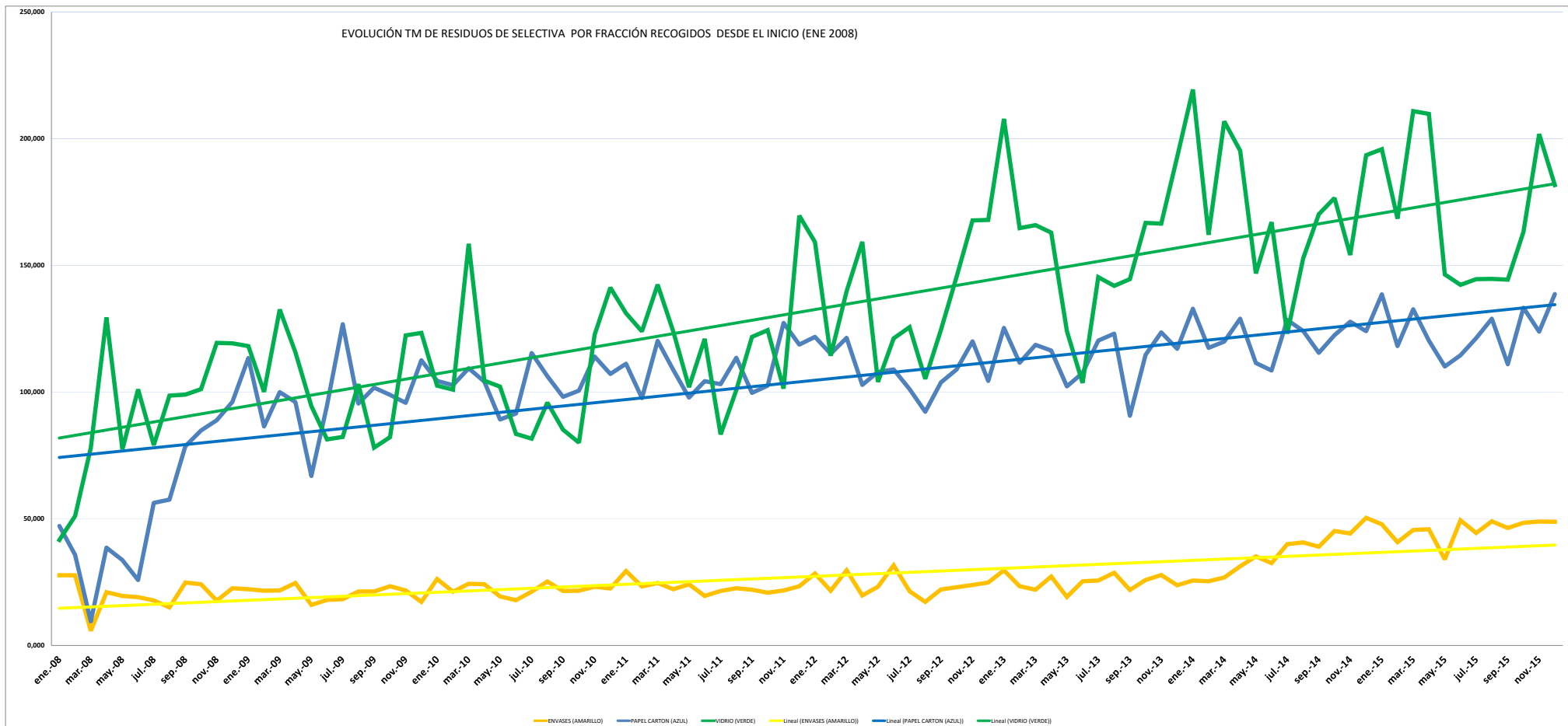
| | 2006 | | 2007 | | | | 2008 | | | | 2009 | | | | 2010 | | | | 2011 | | | | 2012 | | | | 2013 | | | | 2014 | | | | 2015 | | | |
|------------|------------|------------|------------|---------|---------|-----------|------------|---------|-----------|-----------|------------|---------|-----------|-----------|------------|---------|-----------|-----------|------------|---------|-----------|-----------|------------|---------|-----------|-----------|------------|---------|-----------|-----------|------------|---------|-----------|-----------|-------|--------|--|--|
| | RSU | ENVASES | PAPEL | VIDRIO | RSU | ENVASES | PAPEL | VIDRIO | RSU | ENVASES | PAPEL | VIDRIO | RSU | ENVASES | PAPEL | VIDRIO | RSU | ENVASES | PAPEL | VIDRIO | RSU | ENVASES | PAPEL | VIDRIO | RSU | ENVASES | PAPEL | VIDRIO | RSU | ENVASES | PAPEL | VIDRIO | RSU | ENVASES | PAPEL | VIDRIO | | |
| ENERO | 3.987.330 | 4.037.710 | 3.933.780 | 27.770 | 47.220 | 41.660 | 3.481.420 | 22.220 | 113.500 | 118.160 | 3.315.940 | 26.300 | 104.440 | 102.600 | 3.406.550 | 29.420 | 111.200 | 131.180 | 3.466.630 | 28.380 | 121.820 | 159.220 | 3.505.460 | 29.680 | 125.340 | 207.840 | 3.750.290 | 25.620 | 132.960 | 219.480 | 3.715.250 | 47.820 | 138.680 | 195.880 | | | | |
| FEBRERO | 3.491.335 | 3.539.810 | 3.540.960 | 27.700 | 35.780 | 51.060 | 3.005.080 | 21.660 | 86.470 | 100.140 | 3.076.450 | 21.240 | 102.800 | 101.000 | 3.057.990 | 23.300 | 97.640 | 123.960 | 3.072.400 | 21.640 | 115.140 | 114.360 | 3.025.400 | 23.380 | 111.640 | 164.760 | 3.215.170 | 25.380 | 117.560 | 162.080 | 3.270.970 | 40.760 | 118.200 | 168.480 | | | | |
| MARZO | 3.896.770 | 3.914.260 | 3.753.400 | 5.820 | 9.560 | 78.060 | 3.264.170 | 21.700 | 100.000 | 132.660 | 3.356.510 | 24.420 | 109.440 | 158.580 | 3.371.160 | 24.680 | 120.290 | 142.500 | 3.361.320 | 29.680 | 121.400 | 139.780 | 3.350.500 | 22.000 | 118.740 | 165.920 | 3.510.580 | 26.840 | 119.940 | 206.880 | 3.058.470 | 45.620 | 132.720 | 210.960 | | | | |
| ABRIL | 3.893.460 | 3.751.850 | 3.658.360 | 21.080 | 38.600 | 129.460 | 3.195.270 | 24.700 | 96.140 | 115.740 | 3.200.790 | 24.240 | 104.160 | 104.500 | 3.369.910 | 22.240 | 108.760 | 123.900 | 3.201.630 | 19.740 | 102.880 | 159.360 | 3.375.350 | 27.220 | 116.420 | 163.020 | 3.454.670 | 31.220 | 129.000 | 195.320 | 3.517.620 | 45.900 | 120.320 | 209.840 | | | | |
| MAYO | 3.489.500 | 3.418.930 | 3.403.190 | 19.540 | 33.720 | 77.460 | 2.896.890 | 16.040 | 66.900 | 94.500 | 2.943.220 | 19.340 | 89.240 | 102.220 | 3.069.790 | 24.290 | 97.860 | 102.000 | 3.068.370 | 23.200 | 108.000 | 104.100 | 3.135.010 | 19.160 | 102.260 | 124.060 | 3.271.310 | 35.160 | 111.500 | 146.860 | 3.271.720 | 33.980 | 110.140 | 146.540 | | | | |
| JUNIO | 3.491.110 | 3.394.540 | 3.356.540 | 19.060 | 25.880 | 101.060 | 2.880.610 | 18.030 | 94.860 | 81.320 | 2.975.150 | 17.900 | 91.560 | 83.480 | 3.118.890 | 19.620 | 104.320 | 121.080 | 3.156.610 | 31.700 | 108.960 | 121.300 | 3.042.290 | 25.360 | 107.620 | 103.700 | 3.248.500 | 32.580 | 108.580 | 167.160 | 3.460.850 | 49.420 | 114.560 | 142.360 | | | | |
| JULIO | 3.995.000 | 4.024.730 | 3.848.360 | 17.780 | 56.320 | 79.140 | 3.334.500 | 18.320 | 126.880 | 82.320 | 3.393.370 | 21.240 | 115.440 | 81.700 | 3.538.130 | 21.540 | 103.220 | 83.280 | 3.457.280 | 21.460 | 101.240 | 125.660 | 3.690.321 | 25.680 | 120.380 | 145.380 | 3.707.380 | 40.000 | 128.560 | 123.120 | 3.847.670 | 44.420 | 121.300 | 144.680 | | | | |
| AGOSTO | 4.387.425 | 4.352.660 | 4.079.940 | 15.080 | 57.610 | 98.700 | 3.590.290 | 21.360 | 95.600 | 102.640 | 3.655.720 | 25.240 | 106.340 | 95.920 | 3.798.930 | 22.640 | 113.580 | 100.780 | 3.723.260 | 17.240 | 142.000 | 105.280 | 3.840.889 | 28.740 | 123.100 | 142.000 | 3.822.410 | 40.700 | 124.200 | 152.260 | 4.116.650 | 49.000 | 129.040 | 144.680 | | | | |
| SEPTIEMBRE | 3.916.845 | 3.755.980 | 3.460.090 | 24.880 | 78.720 | 99.000 | 3.149.240 | 21.360 | 101.780 | 78.080 | 3.198.570 | 21.540 | 98.120 | 85.180 | 3.331.250 | 22.640 | 99.760 | 121.800 | 3.173.300 | 22.140 | 103.880 | 124.560 | 3.336.030 | 21.980 | 90.740 | 144.640 | 3.644.550 | 38.980 | 115.520 | 170.260 | 3.616.450 | 46.360 | 111.000 | 144.420 | | | | |
| OCTUBRE | 3.946.315 | 3.870.470 | 3.537.440 | 24.200 | 84.870 | 101.160 | 3.198.090 | 23.400 | 98.900 | 82.200 | 3.320.490 | 21.620 | 100.620 | 80.100 | 3.447.670 | 20.880 | 102.540 | 124.440 | 3.458.240 | 23.060 | 108.940 | 145.600 | 3.547.920 | 25.820 | 114.800 | 166.860 | 3.698.130 | 45.220 | 122.540 | 176.660 | 3.793.860 | 48.500 | 133.300 | 163.300 | | | | |
| NOVIEMBRE | 3.905.535 | 3.825.750 | 3.335.010 | 17.740 | 88.880 | 119.460 | 3.076.650 | 21.720 | 95.840 | 122.420 | 3.135.290 | 23.200 | 114.040 | 122.680 | 3.287.860 | 21.700 | 127.380 | 101.440 | 3.329.300 | 23.900 | 120.940 | 167.800 | 3.502.540 | 27.780 | 123.560 | 166.520 | 3.381.030 | 44.240 | 127.820 | 154.120 | 3.712.010 | 48.960 | 123.860 | 203.920 | | | | |
| DICIEMBRE | 3.891.850 | 3.873.830 | 3.432.840 | 22.660 | 96.220 | 119.240 | 3.261.940 | 17.240 | 112.600 | 123.380 | 3.238.560 | 22.520 | 107.190 | 141.280 | 3.263.800 | 23.360 | 118.800 | 169.640 | 3.283.250 | 24.920 | 104.440 | 168.040 | 3.609.690 | 23.800 | 117.120 | 192.820 | 3.666.500 | 50.460 | 124.140 | 193.560 | 3.785.070 | 48.820 | 138.780 | 181.780 | | | | |
| TOTAL AÑO | 46.292.470 | 45.760.520 | 42.340.310 | 243.310 | 653.380 | 1.095.460 | 38.334.150 | 247.740 | 1.189.470 | 1.233.560 | 38.810.110 | 268.800 | 1.243.390 | 1.259.240 | 40.061.790 | 275.620 | 1.305.380 | 1.446.000 | 39.750.090 | 287.060 | 1.300.060 | 1.634.960 | 40.961.400 | 300.600 | 1.371.720 | 1.887.520 | 42.370.820 | 436.400 | 1.462.320 | 2.068.260 | 43.766.640 | 549.560 | 1.491.000 | 2.054.820 | | | | |
| %/TOTAL | 100,00% | 99,49% | 95,51% | 0,55% | 1,47% | 2,47% | 93,49% | 0,60% | 2,90% | 3,01% | 93,33% | 0,65% | 2,99% | 3,03% | 92,97% | 0,64% | 3,03% | 3,36% | 92,48% | 0,67% | 3,05% | 3,80% | 92,00% | 0,68% | 3,08% | 4,24% | 91,44% | 0,94% | 3,16% | 4,46% | 91,44% | 1,15% | 3,12% | 4,22% | | | | |



| | 2006 | 2007 | 2008 | 2009 | 2010 | 2011 | 2012 | 2013 | 2014 | 2015 |
|-------------------------|------------|------------|------------|------------|------------|------------|------------|------------|------------|------------|
| ENERO | 3.987.320 | 4.037.710 | 4.050.430 | 3.735.300 | 3.549.280 | 3.678.410 | 3.776.050 | 3.868.320 | 4.128.350 | 4.097.630 |
| FEBRERO | 3.491.335 | 3.539.810 | 3.655.500 | 3.213.350 | 3.301.490 | 3.302.890 | 3.323.540 | 3.325.180 | 3.520.190 | 3.598.410 |
| MARZO | 3.896.770 | 3.914.260 | 2.846.840 | 3.518.530 | 3.648.950 | 3.658.600 | 3.652.180 | 3.657.160 | 3.864.240 | 4.047.770 |
| ABRIL | 3.893.460 | 3.751.850 | 3.847.500 | 3.421.850 | 3.492.690 | 3.624.810 | 3.483.610 | 3.682.010 | 3.810.210 | 3.893.680 |
| MAYO | 3.489.500 | 3.418.930 | 3.533.910 | 3.074.330 | 3.154.070 | 3.293.810 | 3.303.670 | 3.380.490 | 3.564.830 | 3.562.430 |
| JUNIO | 3.491.110 | 3.394.540 | 3.502.540 | 3.074.810 | 3.168.090 | 3.369.910 | 3.418.470 | 3.278.970 | 3.556.820 | 3.767.190 |
| JULIO | 3.995.000 | 4.024.730 | 4.001.400 | 3.562.020 | 3.611.750 | 3.746.170 | 3.705.640 | 3.981.761 | 3.999.060 | 4.158.050 |
| AGOSTO | 4.387.425 | 4.352.660 | 4.251.330 | 3.809.890 | 3.883.220 | 4.035.930 | 3.938.580 | 4.134.729 | 4.140.070 | 4.439.570 |
| SEPTIEMBRE | 3.916.845 | 3.755.980 | 3.663.290 | 3.350.460 | 3.403.410 | 3.574.850 | 3.421.880 | 3.593.390 | 3.960.310 | 3.918.230 |
| OCTUBRE | 3.946.315 | 3.870.470 | 3.747.670 | 3.402.590 | 3.522.830 | 3.695.430 | 3.735.840 | 3.855.400 | 4.042.550 | 4.138.960 |
| NOVIEMBRE | 3.905.535 | 3.842.420 | 3.561.090 | 3.316.630 | 3.395.210 | 3.538.380 | 3.641.060 | 3.820.400 | 3.707.210 | 4.086.750 |
| DICIEMBRE | 3.891.850 | 3.990.500 | 3.670.960 | 3.515.160 | 3.509.550 | 3.575.600 | 3.580.650 | 3.943.430 | 4.034.660 | 4.154.450 |
| TOTAL AÑO | 46.292.470 | 45.993.860 | 44.332.460 | 41.004.920 | 41.581.540 | 43.088.790 | 42.981.170 | 44.521.240 | 46.337.500 | 47.862.920 |
| % var. respecto al 2006 | | -0,65% | -4,23% | -11,42% | -10,18% | -6,92% | -7,15% | -3,83% | 0,10% | 3,39% |



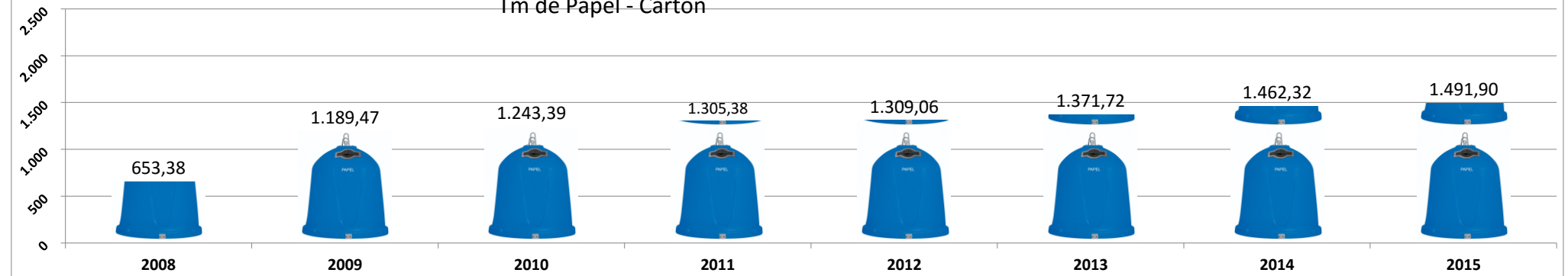




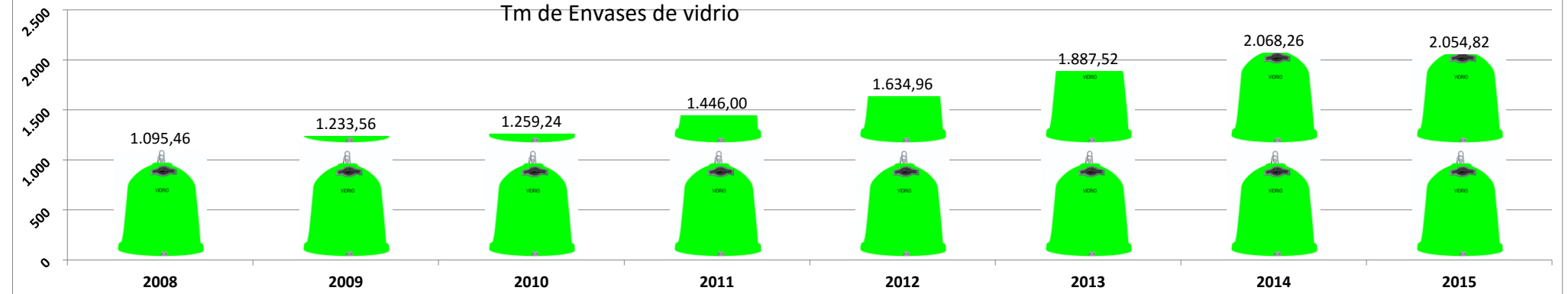
Tm de Envases de Plástico, latas y bricks



Tm de Papel - Cartón

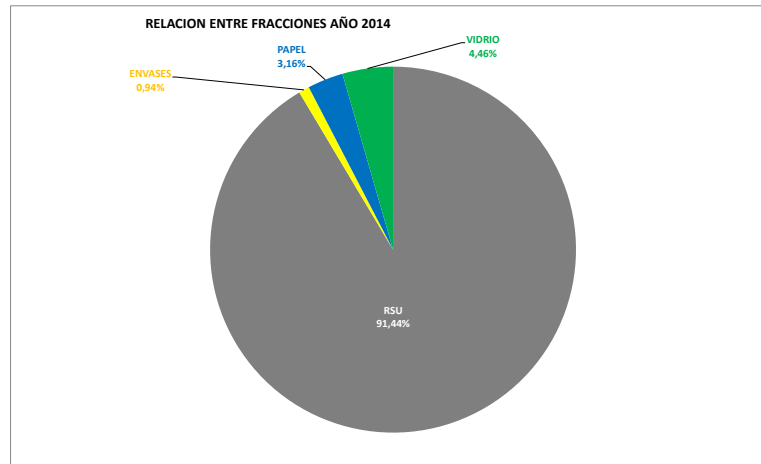
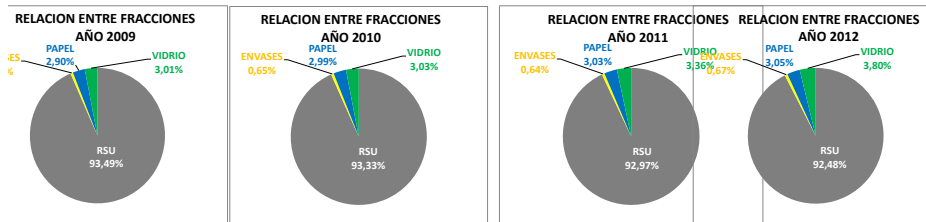


Tm de Envases de vidrio



F
ENVASES
0,55%

E



TONELADAS AÑO R.S.U. (Fracción Resto)

